

# COMMERCIAL DOOR 2000

LIGHT DUTY COMMERCIAL GRADE DOOR

SERIES

## DBCI's Commercial Steel Curtain Roll-Up Door Solutions Include:

### 1900 Series (1950 Insulated)

- 26-gauge Grade E galvanized

### 2000 Series (2250 Insulated)

- 16-gauge galvanized steel drums with steel ball bearings
- 26-gauge Grade E steel curtain

### 2500 Series (2750 Insulated)

- Heavy duty
- 10-gauge steel slide bolt lock
- Width up to 18 feet

### 5000 Series (5250 Insulated)

- Aluminum bottom bar with steel angle reinforcement
- Wind certified up to 20' wide

The 2000 Series is the right choice for light-duty applications requiring frequent usage such as warehouses, freight terminals, car washes, machine shops, auto body shops and much more. The 16-gauge, 12" drums allow for easy retraction. These doors are low-maintenance, which is what every owner wants in a quality door. DBCI's commercial-grade steel curtain roll-up doors are designed to meet and/or exceed operational requirements for commercial doors with little or no maintenance.

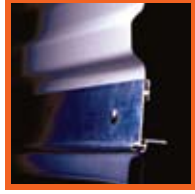


Integrity. Partnership. Quality.



## Curtain

- 26-gauge galvanized, Grade E hard steel
- Deep-ribbed corrugation
- Maximum opening size of 12' x 18'
- Flexible wear strips
- **NOTE:** The 2000 is not rated for wind loads. Please see the 2500 or 5000.



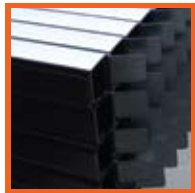
## Bottom Bar

- 6063 – T6 aluminum extrusion
- 2" x 1 1/2" galvanized angles
- Bulb astragal
- Stainless steel nuts and bolts



## Axle-Drum Assembly

- 1 5/16" O.D. steel axle, 14-gauge
- 11-gauge axle on doors over 10' wide
- Utilizes 12", 16-gauge drums
- Shielded steel ball bearings in drums
- Full top sheet

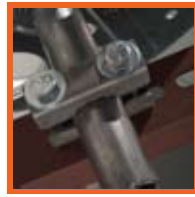


## A.C.E. Guide System

- 16-gauge galvanized steel
- Adjustable bolt on head stop
- Polyethylene wear strip
- Pre-punched for lock and attachment fasteners

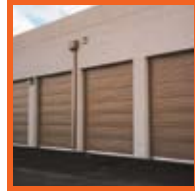
## Hardware

- Saddle clamps with set fasteners
- 10-gauge slide locks; 2 per door
- 16-gauge step plate; 2 per door
- 1/4" steel angle T-bracket



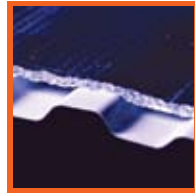
## Opening Height Headroom

- Doors up to 10' require 20" of headroom
- Doors 10' to 14' require 22" of headroom
- Doors over 14' require 24" of headroom



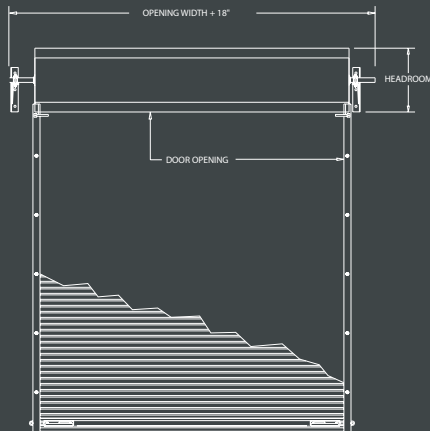
## Options

- 1900 Series – low overhead option
- Chain hoist 4:1 reduction
- Vision panels (17" x 5")
- Top draft stop
- Hood
- Steel mounting plates
- Electric operator

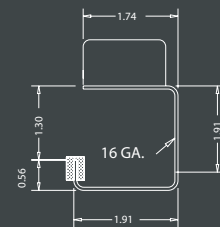


**\*Also available with insulation (2250 Series)**

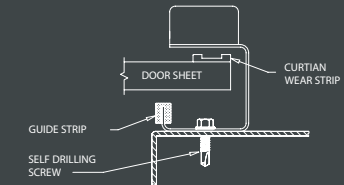
INTERIOR ELEVATION



GUIDE DETAIL

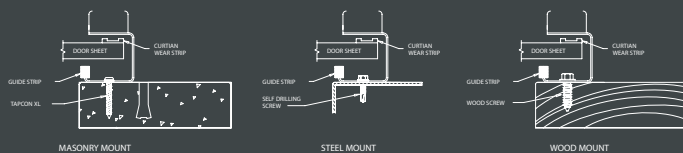


DOOR ENGAGEMENT

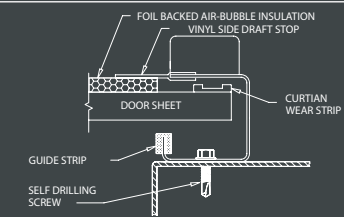


SERIES 2000

GUIDE MOUNTING



INSULATED DOOR DETAIL



SERIES 2250