



MAGIC-ACCESS™ LOW ENERGY SWING DOOR OPERATOR

Medium-to-Low Duty Swing Door Operator with Light Manual Opening Force

The STANLEY Magic-Access Low Energy Operator is designed to provide a cost effective, custom solution for automating swing doors. This medium-to-low duty swing door operator can automate new or existing swing door panels up to 125 pounds through the use of a push plate, wave sensor, or other “knowing act” device. The header width is customized to span the full width of the door opening, adding to a finished, aesthetically pleasing look. The end result is a professionally installed automatic door system that is quiet, smooth, and safe.

FEATURES AND BENEFITS

- Powers door panels up to 42” (1067 mm) wide and 125lbs (57 kg)
- Lighter manual opening force as compared to the force required on a manual swing door
- Adjustable closing time delay
- Microprocessor-based controller will stop immediately at any point of the doors swing cycle when an obstacle is detected.
- UL listed for service in the U.S and Canada, complies with ANSI/BHMA A156.19 and meets the applicable provisions of ANSI 117.1
- Acts as a mechanical closer for manual operation in the event power is shut off

A DIVISION OF:

STANLEY
Security

MAGIC-ACCESS LOW ENERGY SWING DOOR OPERATOR

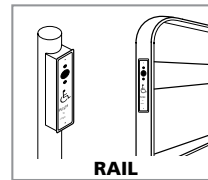
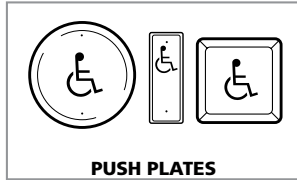
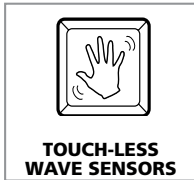
OPTIONAL FEATURES

- Custom finishes
- Sequencing module
- Lock delay module
- Power close selectable
- Magic Touch Activation for power open when opened manually past 3°
- Complete factory engineered door system that includes center pivoted door panels
- Mounting Options
 - Surface mount
 - Overhead concealed
 - In-swing
 - Out-Swing

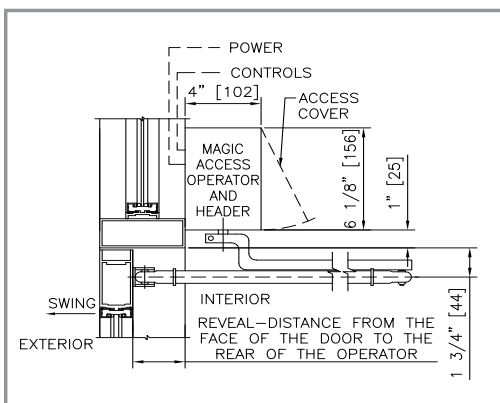
SPECIFICATIONS

Header Size	6 1/8" (152mm) high x 4.0" (102mm) deep
Swing Door Panels	Up to 42" (1067mm)
Door Panel Weight	Up to 125lbs (57kg)
Drive System	1/8 HP DC motor, gear drive
Controller	Electronic control system with built-in "reverse-on-obstruction"
Activation Options	Mats, push plates, touch-less wave sensors, wireless radio controls, or Magic-Touch Activation
Breakout	Breakaway door stop
Power Required	120 VAC, minimum of 5 amp, 50/60 HZ
Code Compliance	UL/cUL 325, UL10C, ANSI/BHMA A156.19, IBC, NFPA 101, ANSI 117.1

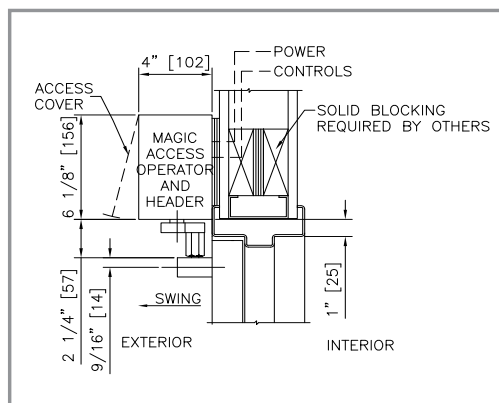
ACTIVATION



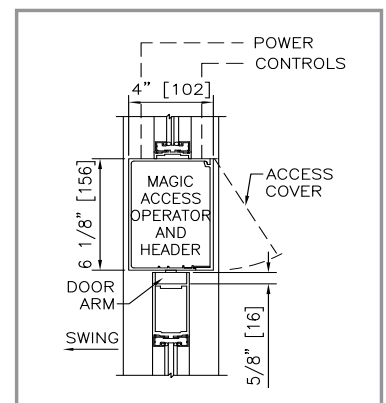
ELEVATION VIEWS



SURFACE MOUNTED VISIBLE "OUT"



SURFACE MOUNTED VISIBLE "IN"



CONCEALED