



**MANUFACTURING, INC.**

# STEEL COUNTER DOORS *Model N*



## DURABLE AND COMPACT DESIGN WITH CLEAN AESTHETICS

R&S Steel Counter Doors combine strength and durability with compact design and neat appearance.

Although primarily utilized as a closure on counter openings, these doors may also be used on openings large enough to provide walk-thru or drive-thru access.

R&S Steel Counter Doors can be modified in construction to meet steel service door requirements up to 16 feet wide, 10 feet high at a maximum of 144 square feet.

## AVAILABLE FINISHES

### Standard



Slats, Hood,  
Steel Footpiece,  
Guides & Brackets  
*Gray*

### Optional



Slats & Hoods  
*Tan Polyester Primer*



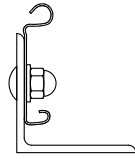
Footpiece, Guides, & Brackets  
*Hot-Dip Galvanizing, or Tan*



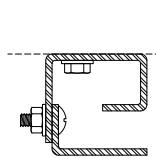
Available on all exposed  
surfaces in a variety of colors  
*Powder Coat*

## CONSTRUCTION

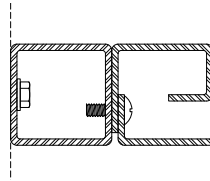
### Angle Footpiece



### Face Mount

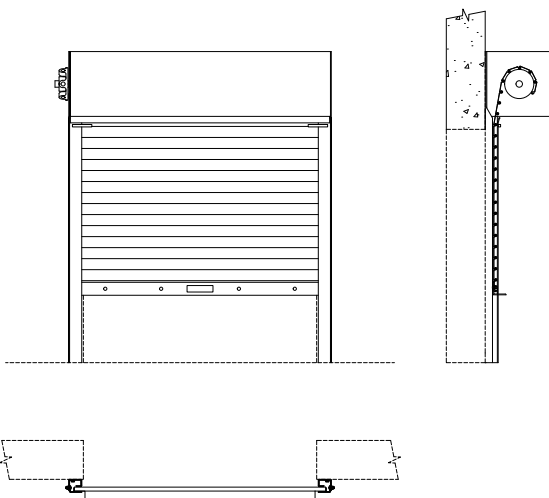
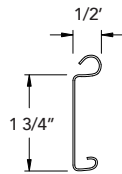


### Between-Jamb Mount



### Optional

Type 17 Small Flat Slat  
22 or 20 Gauge Galvanized Steel



## SPECIFICATIONS

### Warranty

2 year/ 20,000 cycles

### Mounting

Face of wall or between-jamb

### Operation

- Standard, up to 14' wide: Push-pull
- Standard, over 14' wide: Awning crank
- Optional: Chain hoist, Motor prep

### Curtain

Galvanized steel, coil, riveted endlocks. Bottom of curtain reinforced by single angle footpiece of material matching slats, with astragal.

### Guides

Box shape guides formed from steel.

### Brackets

Steel plates

### Barrel

Steel pipe

### Hood

24 gauge galvanized steel.

### Locking

Slidebolt locks on single angle footpiece.

## OPTIONS

### High Cycle Construction

Designs to provide up to 50,000 operating cycles or maximum possible in design.

### Vision Lites

Single or multiple 3" wide cutouts, open for ventilation or covered with acrylic.

### Sloped or Stepped Footpiece

A custom footpiece to match sloping or irregular sill conditions.

### Key or thumbturn cylinder lock

Installed on footpiece.

### Tubular Motor Operator

For counter doors in limited usage applications. Available in 115 volt/single phase with constant contact one button or key switch control. Can also be provided with a low voltage controller when options such as a 3 button station, reversing edge or timer are required.



**R&S Manufacturing of Northern CA**  
800-221-3667 | 510-429-1788

**R&S Manufacturing of Southern CA**  
800-350-3667 | 909-596-2090

**R&S Manufacturing Oregon**  
800-359-4197 | 503-777-6370

[www.rsdoorproducts.com](http://www.rsdoorproducts.com)